

DO NOT SCALE FROM DRAWINGS. WORK TO FIGURED DIMENSIONS  
ONLY. ARCHITECT TO BE NOTIFIED OF ANY DISCREPANCIES.

THIS DRAWING TO BE READ IN CONJUNCTION WITH ALL  
ARCHITECT'S DRAWINGS, SPECIFICATIONS CONSULTANTS'  
DESIGN TEAM DRAWINGS AND SPECIFICATIONS.

A horizontal scale bar with a double line border. Inside the bar, there are four vertical tick marks dividing it into five equal segments. Below the bar, the numbers 0, 1, 2, 3, 4, and 5 are placed at the corresponding tick marks. Below the number 0, the text '1:50' is written.

0 1 2 3 4 5  
1:50

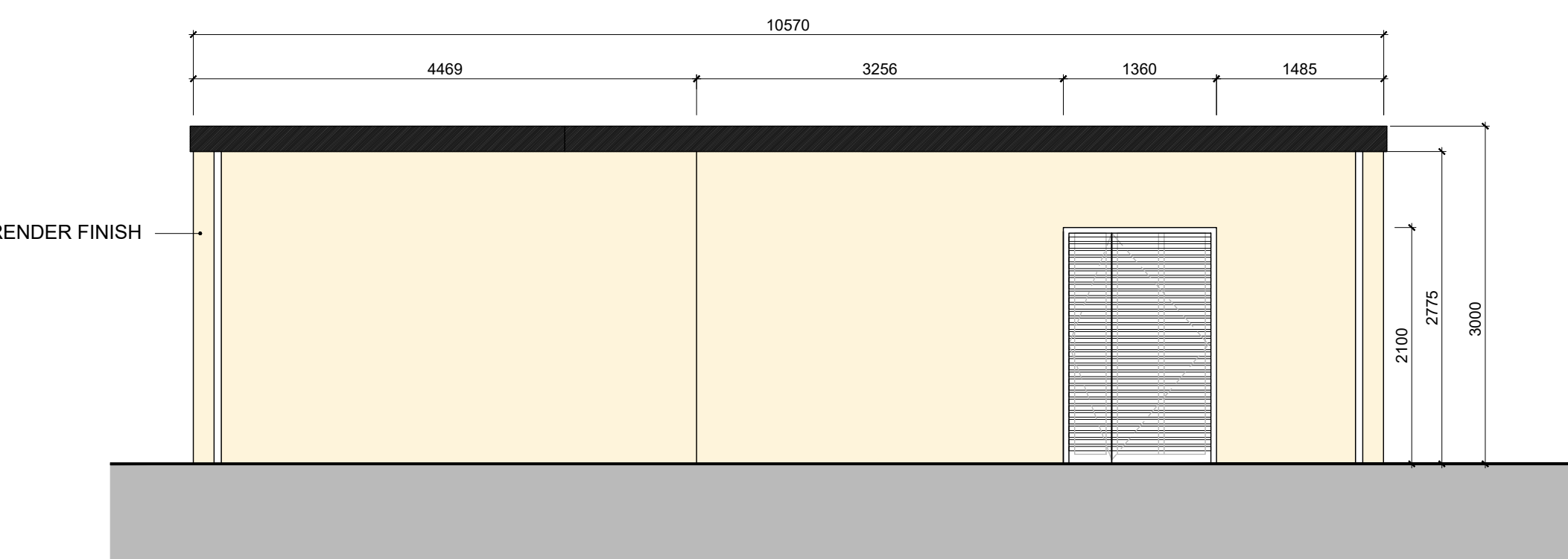
**NOTES ON FINISHES:**

ROOF : TO BE FINISHED IN TIMBER OR CONCRETE FLAT SLAB  
ROOF SELECTED COLOUR OR SIMILAR APPROVED.

WALLS : PAINTED SAND / CEMENT RENDER OR SELF COLOURED  
RENDER.

JOINERY : ALL DOORS, FRAMES AND LEAVES.  
TO BE ALUMINIUM POWDER-COATED/TIMBER FRAMED OR  
uPVC TO SELECTED COLOUR

RAINWATER GOODS : GUTTERS, DOWNPIPS, AND FIXINGS TO BE uPVC OR  
ALUMINIUM POWDER COATED TO SELECTED COLOUR TO  
MATCH ROOF SLATES



Technical drawing of a wall section. The drawing shows a cross-section of a wall with a yellow main body and a black top layer. The total width is 10570. The total height is 3000. The yellow section has a height of 2775. A label 'RENDER FINISH' points to the yellow section. The black top layer is 225 thick. The wall is shown above a grey foundation.

Dimension	Value
Total Width	10570
Total Height	3000
Yellow Section Height	2775
Black Top Layer Thickness	225

Technical drawing of a building facade showing dimensions and area calculations. The drawing includes a plan view at the top and a side elevation below it.

**Plan View Dimensions:**

- Overall width: 10570
- Left side width: 300
- Distance between first and second columns: 3869
- Distance between second and third columns: 5799
- Right side width: 300

**Side Elevation Dimensions:**

- Overall height: 3000
- Height of the upper section: 2775

**Area Calculations:**

- Area of the upper section: 28 570,00 m<sup>2</sup>
- Area of the lower section: 32 100,00 m<sup>2</sup>
- Total area: 60 670,00 m<sup>2</sup>

**Labels:**

- BIN STORE
- CYCLE STORE

Architectural elevation drawing of a building facade. The drawing shows a yellow wall with a black horizontal band at the top. A window with horizontal louvers is centered on the left side. Dimensions are provided in millimeters (mm):

- Overall width: 4700 mm
- Overall height: 3000 mm
- Window height: 2100 mm
- Window width: 1360 mm
- Distance from left edge to window center: 700 mm
- Distance from window center to right edge: 1318 mm
- Distance from window center to right edge (alternative measurement): 2322 mm
- Distance from top edge to black band: 2775 mm

The label "RENDER FINISH" points to the yellow wall surface.

Technical drawing of a rectangular structure. The width is labeled as 4700. The height is labeled as 2775. The total height, including a black horizontal band at the top, is labeled as 3000.

KEYPLAN - NTS

REV	DATE	DESCRIPTION	ISSUED BY
<b>REVISIONS</b>			

CLIENT:  
JH Kinzie Ltd

PROJECT TITLE  
KINNEGAD

DRAWING TITLE:  
Bicycle & Bin Stores - Creche

**M<sup>2</sup>CORM**  
ARCHITECTURE  
AND URBAN DESIGN

No.1 Grantham Street, Dublin 8  
D08 A49Y Tel: +353 (0)1 478 8700

Block 6, Central Business Park  
Tullamore, County Offaly, R35 FF8  
Tel: +353 (0)57 932 3867

E: arch@m2corm.com W: m2corm.com

*Figured dimensions only to be used. This drawing is copyright of M2CORM Ltd. All information is shared as per approved use in accordance with I.S. NA 2021 to I.S. EN ISO 19650-2: 2018 'A' Status 'Code' above is repeated, this information has been shared as Status Code 'So Work in Progress (WIP)' / Draft.*